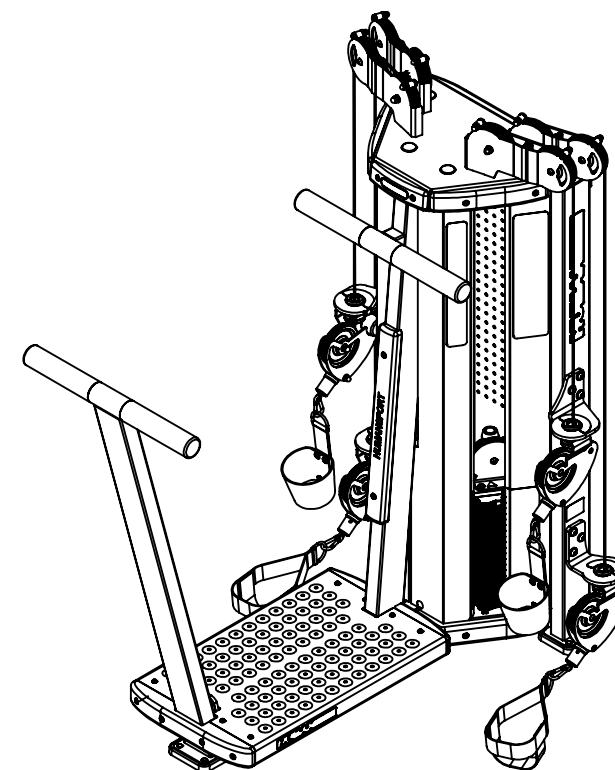
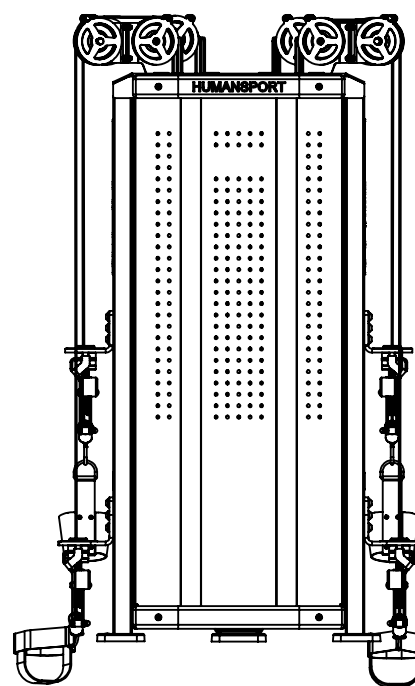
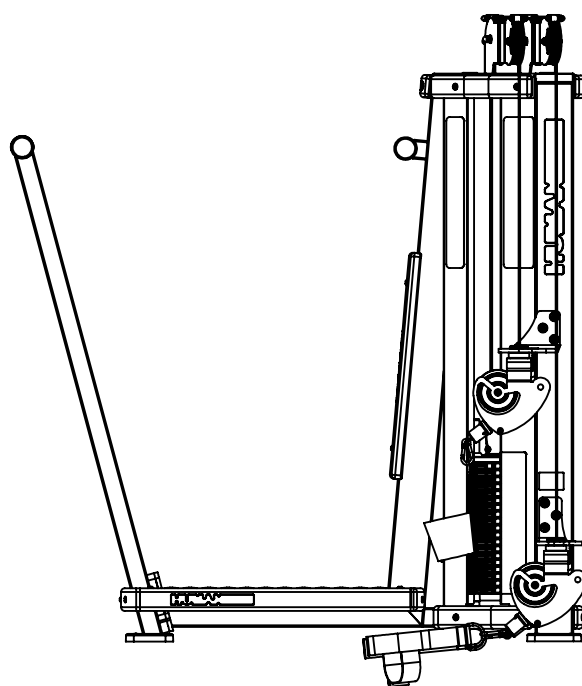
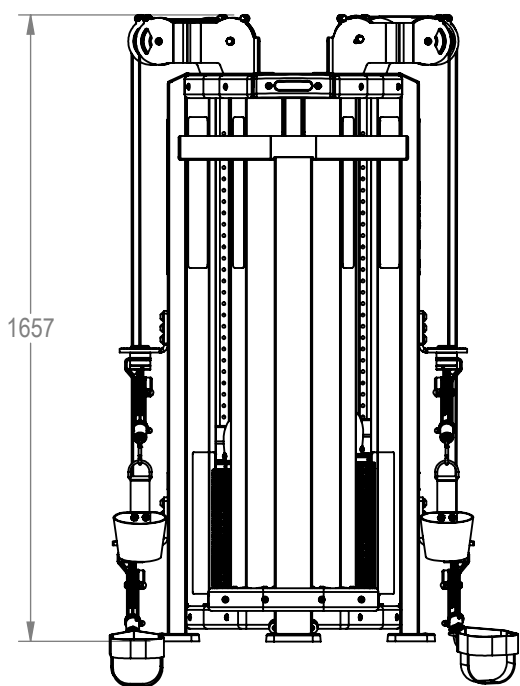
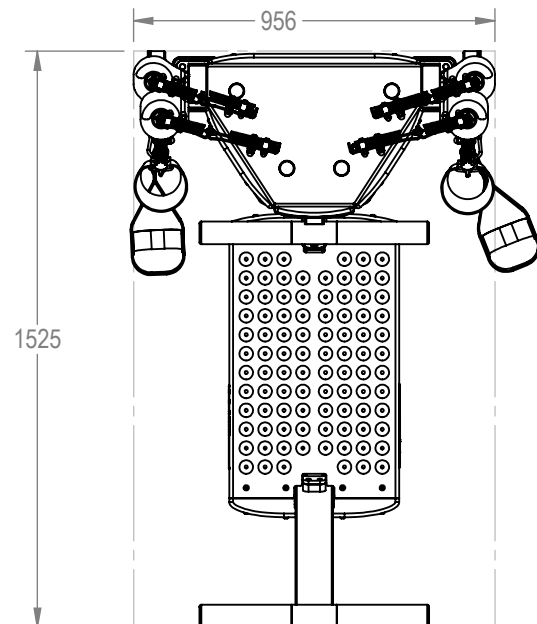


NOTES:



REVISION HISTORY				
REV	DATE	DESCRIPTION	ECO	BY
A	-	DOCUMENT RELEASE	---	---
B	8/27/2013	REDRAW BOM, CHANGE TO LOCK N LOAD WWEIGHT STACK, CHANGE SHROUDS, CHANGE STICKERS	14331	CRB

**DOCUMENT STATUS:
RELEASE**

NOTICE OF PROPRIETARY INFORMATION

THIS DOCUMENT SHALL NOT BE REPRODUCED NOR SHALL THE INFORMATION CONTAINED HEREIN BE USED BY OR DISCLOSED TO OTHER EXCEPT AS EXPRESSLY AUTHORIZED BY CORE HEALTH & FITNESS, LLC.

MATERIAL
SEE BOM

FINISH
SEE BOM

VENDOR:

THIRD ANGLE PROJECTION



DRAWN	INITIAL CRB	DATE 8/27/2013
CHECKED		
APPROVED		

CORE HEALTH & FITNESS, LLC
4400 NE 77th Ave., Suite 300
Vancouver, WA 98662

CORE PART NO
9HS-M9201-XXXXX REV **B**

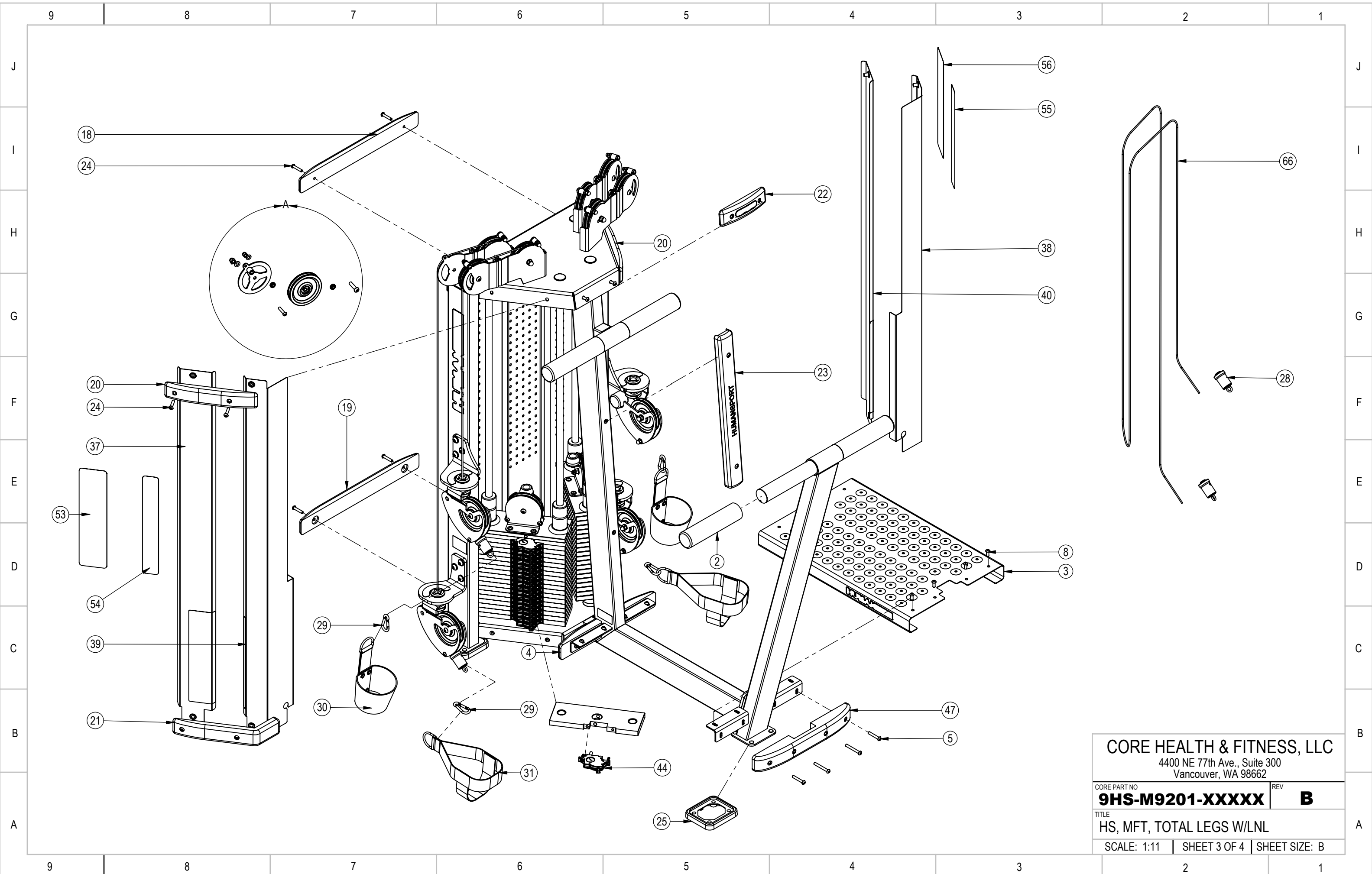
TITLE
HS, MFT, TOTAL LEGS W/LNL

SCALE: 1:20 | SHEET 1 OF 4 | SHEET SIZE: B

9	8	7	6	5	4	3	2	1	
ITEM NO.	PART NUMBER	DESCRIPTION		QTY.					
J	2	020-6994	GRIP, SUPPORT, PLASTIC, HS	4					J
	3	020-6992	PLATFORM, SHEET METAL, SHORT,HS	1					
	4	020-7142-X	TRIM, PLATFORM,BACK, T-LEGS, HS	2					
	5	730-3044	BOLT, TRIM, PLATFORM, LEGS, HS	6					
I	6	730-3043	WASHER, PULLEY BRACKET, HUMAN SPORT	33					I
	8	730-3045	BOLT, PLATFORM, TOTAL LEGS, HS	14					
	18	020-6986-X	TRIM, WOOD, TOP, BACK, HS	1					
	19	020-6987-X	TRIM, WOOD, BOTTOM, BACK, HS	1					
	20	020-6983-X	TRIM, WOOD, UPPER, HS	2					
	21	020-6982-X	TRIM, WOOD, BOTTOM, HS	2					
H	22	020-6985-X	TRIM, WOOD, TOP, CENTER, HS	1					H
	23	020-6984-X	TRIM, WOOD, CENTER, HS	1					
	24	730-3030	BOLT, GENERAL, HUMAN SPORT	23					
	25	020-6988	PAD, RUBBER, FEET, HS	3					
	28	730-0129	BEARING, ROTATING, CLAMP	4					
G	29	730-0143	CLIP, METAL, HS	4					G
	30	730-0139	HARNDESS, TOE, HS	2					
	31	730-0140	HARNESS, HEEL, HS	2					
	32	050-2007	LABEL, HUMAN SPORT,41.1 X 5.0	2					
F	33	050-2010	LABEL, HUMAN SPORT, 22CM X 2.67CM	2					F
	35	050-2008	LABEL, CAUTION, MOVING PARTS, HS	2					
	37	730-3025	SHROUD, RIGHT, OUTSIDE	1					
	38	730-3037	SHROUD, INSIDE, RIGHT, HS	1					
	39	730-3036	SHROUD, INSIDE, LEFT, HS	1					
E	40	730-3022	SHROUD, OUTSIDE, LEFT, HUMAN SPORT	1					E
	42	731-0101	PLATE,WEIGHT,5Kg,18mm	38					
	44	731-1423-KT	KIT,ASSY,SWITCH,LNL,STRAIGHT	38					
	45	730-3029	STICKER, LOCKNLOAD, WEIGHT INCREMENT, HUMAN SPORT	1					
D	47	020-6990-X	TRIM, WOOD, PLATFORM, TOTAL LEGS	1					D
	48	730-0142	PULLEY, ASSY, HS	12					
	50	730-3044	BOLT, TRIM, PLATFORM, LEGS, HS	2					
	53	730-3048	STICKER, OUTSIDE LEFT, SHROUD, TOTAL LEGS, HS	1					
	54	730-3049	STICKER, INSIDE LEFT, SHROUD, TOTAL LEGS, HS	1					
C	55	730-3047	STICKER, INSIDE RIGHT, SHROUD, TOTAL LEGS, HS	1					C
	56	730-3046	STICKER, OUTSIDE RIGHT, SHROUD, TOTAL LEGS, HS	1					
	58	730-3020	PULLEY BOLT, HUMAN SPORT	7					
	59	730-3034	ACORN NUT, GENERAL, HUMAN SPORT	7					
	60	730-3033	ACORN NUT, PULLEY BOLT, HUMAN SPORT	7					
B	61	120-3301	WASHER, M10	7					B
	62	730-3035	SPACER, PULLEY BEARING, HUMAN SPORT	14					
	63	730-3031	OUTER BRACKET, PULLEY, HUMAN SPORT	7					
	64	730-3032	SPACER, PULLEY BRACKET, HUMAN SPORT	7					
A	66	130-1751	CABLE, 6.5 METERS, HS	1					A

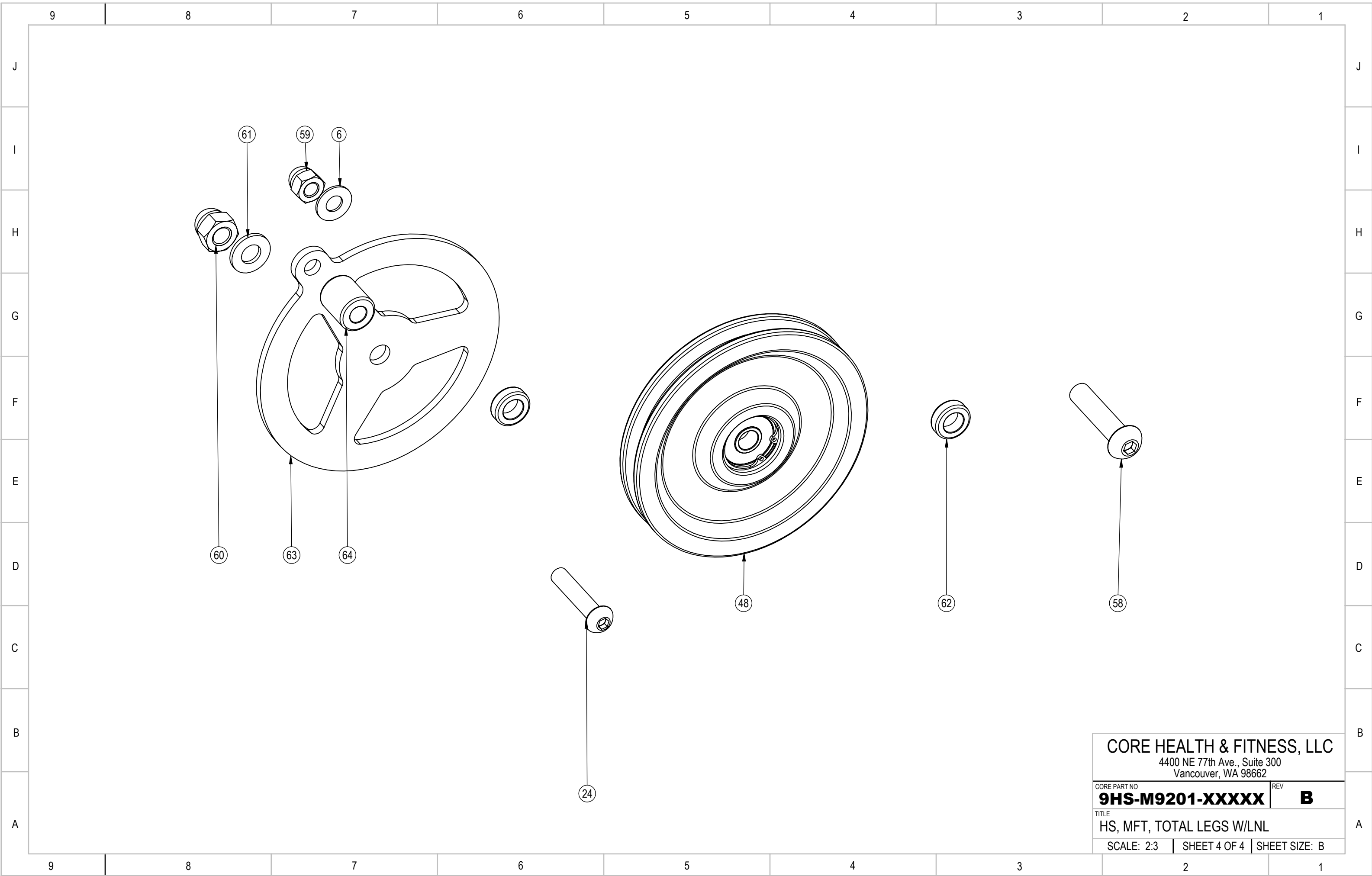
CORE HEALTH & FITNESS, LLC
4400 NE 77th Ave., Suite 300
Vancouver, WA 98662

CORE PART NO	REV
9HS-M9201-XXXXX	B
TITLE	
HS, MFT, TOTAL LEGS W/LNL	
SCALE: 1:20	SHEET 2 OF 4 SHEET SIZE: B



CORE HEALTH & FITNESS, LLC
 4400 NE 77th Ave., Suite 300
 Vancouver, WA 98662

CORE PART NO	REV
9HS-M9201-XXXXX	B
TITLE	
HS, MFT, TOTAL LEGS W/LNL	
SCALE: 1:11	SHEET 3 OF 4 SHEET SIZE: B



CORE HEALTH & FITNESS, LLC
 4400 NE 77th Ave., Suite 300
 Vancouver, WA 98662

CORE PART NO	REV
9HS-M9201-XXXXX	B
TITLE	
HS, MFT, TOTAL LEGS W/LNL	
SCALE: 2:3	SHEET 4 OF 4 SHEET SIZE: B